

EXPOTM **MANUFACTURA**

11 - 13
FEB 2025

Cintermex, MTY, N.L.

Smart and sustainable
manufacturing for **nearshoring**



Organized by:



Follow us on:

ExpoManufactura



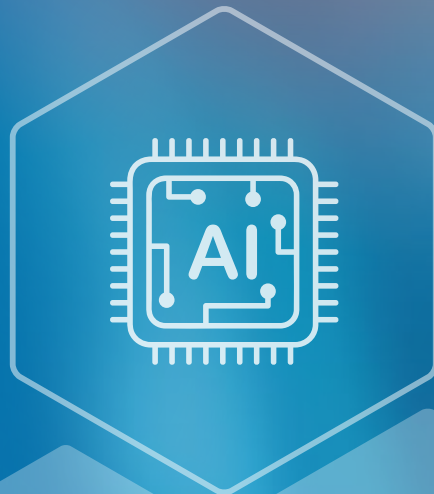
www.expomanufactura.com.mx

Smart and sustainable manufacturing for nearshoring

As the global business landscape continues to change, the manufacturing sector needs to explore more thoroughly the possibilities of nearshoring and prepare to attend present needs without compromising the capabilities of future generations.

In this context, smart manufacturing allows for the streamlining of processes and paves the way towards more agile, adaptable and responsive industrial ecosystems. Likewise, it minimizes environmental impact to contribute to a more environmentally friendly future through responsible resource use, carbon emission reduction and the application of circular economy principles.

We invite you to participate in **Expo Manufactura 2025** towards a smart and sustainable industry from **February 11 to 13, 2025, at Cintermex, Monterrey**; with the most complete offer of technology for transformation, solutions for the industry, machinery and the presence of national and international leaders on the show floor.



Digital Packages

	SPECIAL PACKAGE	DIGITAL SPACE	PROSPECTING	COMMUNITY	FULL CONNECTION
BRANDING					
Digital HUB profile (Self-administered)	✓	✓	✓	✓	✓
Featured logo in our exhibitors section	✓	✓	✓	✓	✓
Company contact information (phone, email, address and website)	✓	✓	✓	✓	✓
Company Members in your exhibitor profile	1	2	3	4	Unlimited
Products and services in your profile	3	5	7	10	20
Social media links	✓	✓	✓	✓	✓
Opportunity to have documents for upload			✓	✓	✓
Cover banner				✓	✓
Video in cover banner				✓	✓
Custom background in your profile					✓
NETWORKING					
Request for incoming and outgoing connections	✓	✓	✓	✓	✓
Possibility to perform searches and connections for chat and video call			✓	✓	✓
Real time of attendees, companies and speakers				✓	✓
MONITORING					
Analytical performance data				✓	✓
Unlimited report data analytics download in real time (contacts, meetings, visits, products)					✓
Scanner for 2025 event (Leadster)	1	2	3	4	Unlimited
Price	\$400 USD	\$600 USD	\$1400 USD	\$2,200 USD	\$3,700 USD

Organized by:



**informa
markets**

Be part of the event recognized for its excellence and relevance in the sector.

**Elevate your brand to
new horizons**

PARTICIPATION OPTIONS

MORE INFORMATION AND BOOTH SALES

MEXICO

Jorge Ruíz
Manager EXPO MANUFACTURA®
Booth sales
Tel. 55 3400 3857
jorge.ruiz@informa.com

INTERNATIONAL LOCATIONS

UNITED STATES AND CANADA

Marina López
International Sales & Marketing
Tel. 81 2010 7949
marina.lopez@informa.com

ALEMANIA, AUSTRIA, SUIZA

Clotilde Giannattasio-Langer
Honegger Srl
Phone: +39 3356267153
giannattasio@honeggergroup.com

CHINA

Sarah Zhou
sarah2046@hotmail.com
WhatsApp / Wechat: +86 152 1035 8505

ITALIA

Francesca Porto
Honegger Srl
Phone: +339 3402779978
porto@honeggergroup.com

TAIWAN

Tim Ke
CHAN CHAO INTERNATIONAL CO., LTD.
WhatsApp or mobile: +886-936-553-676
Office: +886-2-2659-6000 #305
sales@chanchao.com.tw

TURKEY

Ata İŞÇEN
WhatsApp or mobile: +90 532 703 9230
ata@oneexpo.com.tr

COMPLETE PACKAGE

Stands smaller than 27m²

\$551 USD per m²
+ \$400 USD (Hub digital + Leadster)
+ Admin fee. Available space from 9m²

Includes:

- Exhibition space
- Side walls
- Carpet
- Header with name and booth number
- Lighting in the booth
- One table
- Two chairs
- Wastepaper basket
- 110 volt electric plug
- General Services for exhibitors
 - Hub digital - Special Package
 - Leadster - 1 digital scanner

RAW SPACE

Stands smaller than 27m²

\$477 USD per m²
+ \$400 USD (Hub digital + Leadster)
+ ADMIN FEE. Available from 18 m²
in 9m² increments

Includes:

- Exhibition space
- Exhibitor services
 - Hub digital - Special Package
 - Leadster - 1 digital scanner

(Does not include electricity and carpet)

STANDS LARGER THAN 36 M2

\$551 USD per m²
+ \$600 USD (Hub digital + Leadster)
+ ADMIN FEE. Available space from
36m² with 9m² increments

Includes:

- Complete Package
- Hub digital - Digital Space
- Leadster - 2 digital scanners

STANDS LARGER THAN 36 M2

\$477 USD per m²
+ \$600 USD (Hub digital + Leadster)
+ ADMIN FEE. Available space from
36 m² with 9 m² increments

Includes:

- Space and Exhibitor Service
- Hub digital - Digital Space
- Leadster - 2 digital scanners

(Does not include electricity and carpet)